

Principle Workplace Solutions



Office relocation brochure

An opportunity for your business



Moving to a new office is an exciting prospect for your business.

This is your opportunity to:

- Invest in business success
- Maximise brand impact
- Increase staff morale
- Develop the potential of the business
- Introduce smarter ways of working
- Update and integrate technology
- De-clutter
- Go greener
- Improve space efficiency (and so save money)



Brand implementation and corporate identity roll out is a complicated job.

We help you through every stage from concept to completion - planning, consultancy, audit and project management, fit-out, signs and way finding, graphics, interiors, financing and regular maintenance of your branded environments.

As part of the complete implementation services, we provide a dedicated division offering an integrated range of furniture related services to both support a client's ever-changing needs and protect and maximise the life of the clients furniture asset.

All delivered with uncompromising commitment and to the exceptionally high standards we are renowned for.

Through our unique global supply network, Principle360™ we operate in over 100 countries, working with clients who are looking to achieve consistency of brand standards worldwide.

We are leaders in what we do, working for truly world class companies, anywhere in the world.

What Principle Workplace Solutions can offer

At times of change, our client partners tell us we provide exceptional support and innovation in terms of best use of their business spaces.

Moving, expanding, consolidating or co-locating provides the best opportunity to build on the good and manage out the less favourable.

In terms of workspace this might mean that long-intended storage audit or making sure you have enough power and data in the right place!

Whether it's a strategic re-plan of existing furniture into the new space or an alternative concept to help improve productivity, staff morale or corporate identity, the friendly experts at Principle can help.

Hindsight shows us it's never too early to be collectively discussing the interior elements such as furniture, workstation power and data integration and evolving work styles.

Experience tells us the sooner the dialogue begins - the less compromise is required as the scheme unfolds.

This saves our clients time and money from day one!

Our services



Principle offer a full interiors solution

Our services include:

- Front end consultancy, including pre-move
- Space performance analysis - existing and target locations
- Work flow, communication and occupancy profiling
- Space planning and visualisation
- Interior architecture
- Fit-out and furniture
- Audio visual systems integration
- Storage systems – office to warehouse
- Relocation and move management
- Disposals and recycling with kg/CO₂ off-set certification
- Day 2 services to protect your investment
- Change management – process and culture alignment

A true one-stop-shop to minimise risk and reduce costs!

Design solutions

Relocating offers an opportunity to make your space work for you and get the most out of your business

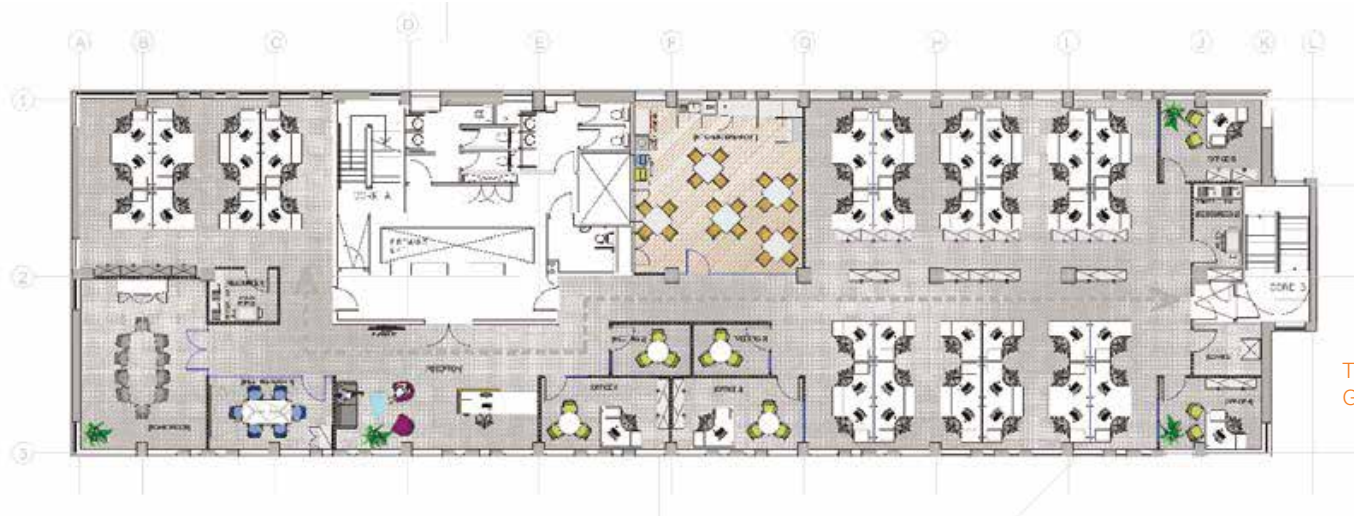
An example of this is the replacement of a traditional, static office with a modern layout designed for knowledge transfer rather than process work. In order to accommodate changing work patterns and the growing emphasis on communication, smarter ways of working can be introduced.

The smart-working office needs to be flexible and multi-purpose in order to support continuously changing work patterns and business strategies. Staff need a range of work settings to support a variety of activities. Spaces for collaboration and communication need to be balanced with quiet spaces for privacy and concentration. The furniture provided must support the necessary technology and promote mobility.

Smart ways of working may include:

- provision of hot desking
- use of multi-functional spaces increased social space for interaction
- balanced with quiet space for concentration interesting
- stimulating environments improve motivation
- use of storagewall for increased storage efficiency

Traditional layout



TOTAL AREA - 537 sqm / 5780 sqft
Gross area per person - 10.1 sqm / 109 sqft

Smarter working layout

Multi-functional spaces:
use of wireless technology in breakout area enables this space to be used for informal meetings

Multi-functional spaces:
office doubles as meeting room - increased space efficiency facilitated by use of WORKWALL

Collaborative spaces:
encourage informal meetings, discussions, exchange of ideas & brainstorming for increased communication

Use of **Storewall** for increased storage efficiency



TOTAL AREA - 357 sqm / 3843 sqft
Gross area per person - 6.7 sqm / 72.5 sqft

Interesting and stimulating environment **increases motivation**

Provision of **hot desking** via flexible benching and lockers for more efficient desk occupancy levels

Increased **social space** for interaction balanced with provision of **quiet areas** for concentration

Less formal solutions encourage **better communication**

Interior fit out



When your organisation relocates, it is important to support the valuable human resource with a responsive and aspirational workplace. Furniture is a key component.

Understanding the way you work is critical so that we can provide suitable tools to support your business.

The right furniture should:

- support your people & processes
- integrate power & data
- be flexible to adapt to different work patterns
- be adaptable to support future change
- be compliant
- satisfy your storage needs, now and in the future
- demonstrate formality / promote collaboration, as required
- incorporate mobility, if required
- define spaces
- reinforce brand identity to staff & visitors

...and thereby improve the performance of your business.



We're here to help

Let us help you make the most of this opportunity to improve your business

Do you need...

- Workplace consultancy
- Storage audit
- Space analysis
- Change management
- Space planning & visualisation
- Interior design & fit-out
- Furniture sourcing
- Relocation & move management
- Furniture disposal
- Day2 services



We are **leaders** in what we do.

Thank you



Paul Barker

Director of Principle Workplace Solutions

paul.barker@principleglobal.com

M +44 (0) 7889 353 310

www.principleworkplacesolutions.com